

Regional Programs

Community Health Services

Tisdale	306-873-8282
Melfort	306-752-6310
Nipawin	306-862-7230
Hudson Bay	306-865-5630
Kelvington	306-327-4711
Cumberland House	306-888-2244

NEECIP

Tisdale 306-873-3411

CAPC

Archerwill	1-877-264-9428
Melfort	306-752-4950

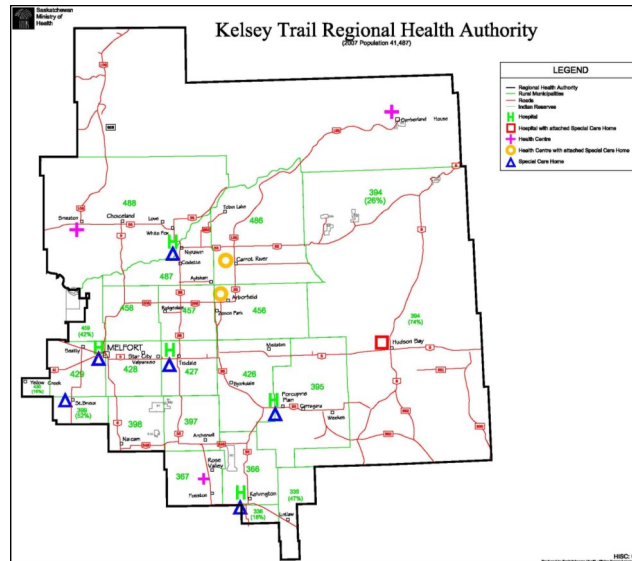
CPNP

Archerwill	1-877-264-9428
------------	----------------

KidsFirst Nipawin	306-862-6222
KidsFirst North	306-688-6620
KidsFirst Tisdale	306-873-8289

Teen and Young Parent Program:
Community Resources & Employment
306-752-6100

Kids' Help phone 1-800-668-6868
Parent Help Line 1-888-603-9100
Farm Stress Line 1-800-667-4442



Early Childhood Resources are a service of the KELSEY TRAIL HEALTH REGION

For more information about this or other services
of the Kelsey Trail Health Region
contact the Regional Office at
306-873-6600 or visit our website
www.kelseytrailhealth.ca



Provincial Health Line—24 hour health advice



Early Childhood Resources in the Northeast Region



Healthy People in Healthy Communities

Early childhood (0-3 years) is our time-sensitive opportunity

By age 3 the brain is becoming ‘hard-wired’ with respect to certain functions. Emotional control and habitual ways of responding are only two areas being developed during these early years. Our responses as parents and community will help to determine the future health and happiness of our children.



REGIONAL SUPPORT SERVICES

KidsFirst (Regional) - In Saskatchewan, all babies are screened at birth so that parents and babies receive the best possible care right from the start. Your participation in this voluntary questionnaire will help us to develop and provide the supports that families need.

Identifying information from the screening will be shared with your public health nurse. It will give her an idea of what supports or information you may need when she visits you at home.

KidsFirst (Nipawin & North) KidsFirst programs are voluntary. Their goals are to help families become the best parents they can be and to have the healthiest children possible. They enhance knowledge, provide support, and build on family strengths.

Community Health Services offers a variety of early childhood programs and services including:

Prenatal Classes –Prenatal mothers in early to late stages of pregnancy and their partner/support person are invited to attend. One-on-one education sessions are also available.

Healthy Beginnings – Visits from the Health Nurse will help to make the move from hospital to home successful. She will visit you, check you and your baby and answer any questions. A certified Lactation Consultant provides Breastfeeding assistance and support.

Child Health Clinics – Public Health Nurses offer basic health services, including immunizations, to all preschool children. Information as to the child’s growth and development is provided to parents.

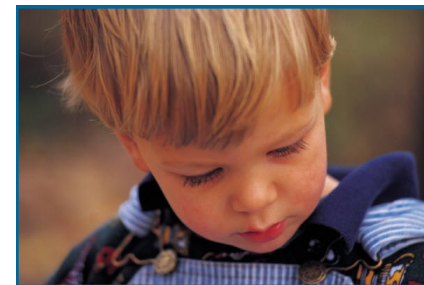
Hello Parents – These parent information sessions run on an ‘as-needed’ basis. All subjects on child health and development may be included.

Early Childhood Team (ECT) – The team includes an early childhood psychologist and a speech language pathologist. They provide special services for questions about speech, language and child development.



Teen and Young Parent Program – A Teen and Young Parent worker helps you to sort through your feelings about being pregnant, planning for your baby, becoming a mother or father, your family’s reactions, or your future plans. Support and information are offered to help you work through the decisions you need to make.

Canada Prenatal Nutrition Program (CPNP) – CPNP is designed to meet the needs of pregnant women who may need extra resources and services such as: prenatal vitamins, food supplements, one on one or group nutrition counseling, home visiting, collective kitchens and breastfeeding education and support.



North East Early Childhood Intervention Program (NEECIP) – NEECIP is a voluntary program for children who have a disability, are developmentally delayed, or at risk of delay. Parents become active partners with the early childhood consultants. NEECIP also offers Mom & Tot, Toddler groups and Preschool programs for all children.

Community Action Program for Children (CAPC) – CAPC provides support services to families. Activities to promote happy, healthy families include: home visits, parent support groups, parenting classes, individual and family counseling, children’s play groups, advocating and referrals.